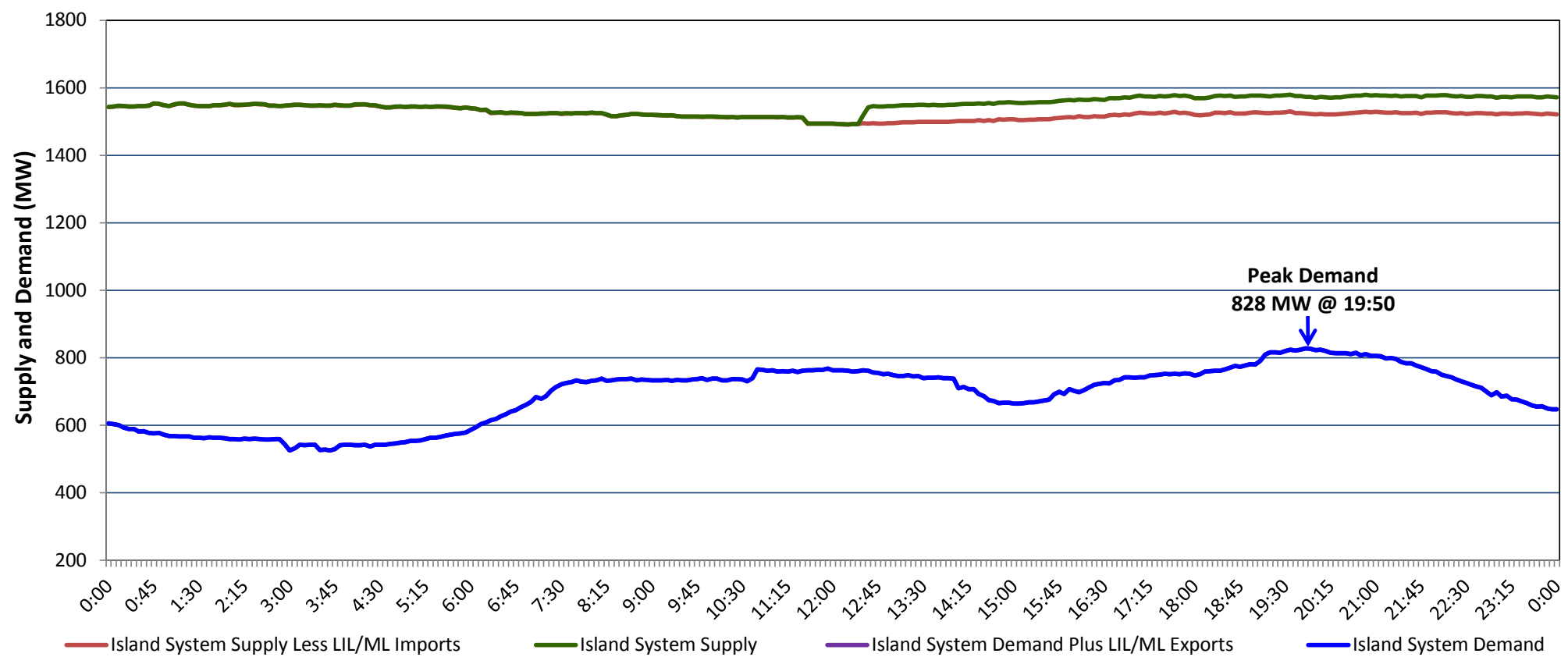


**Newfoundland Labrador Hydro (NLH)
Supply and Demand Status Report Filed Wednesday, September 25, 2019**

**Section 1
Island Interconnected System Supply, Demand & Exports
Actual 24 Hour System Performance For Tuesday, September 24, 2019**



Supply Notes For September 24, 2019

- 1,2
- A As of 0800 hours, July 29, 2019, Holyrood Unit 1 unavailable due to planned outage (170 MW).
 - B As of 1150 hours, August 18, 2019, Hinds Lake Unit unavailable due to planned outage (75 MW).
 - C As of 1300 hours, August 28, 2019, Stephenville Gas Turbine available at 25 MW (50 MW).
 - D As of 0225 hours, September 20, 2019, Holyrood Unit 3 available at 140 MW (150 MW).
 - E As of 1031 hours, September 22, 2019, Bay d'Espoir Unit 1 unavailable (76.5 MW).
 - F As of 1031 hours, September 22, 2019, Bay d'Espoir Unit 2 unavailable (76.5 MW).

**Section 2
Island Interconnected Supply and Demand**

Wed, Sep 25, 2019	Island System Outlook ³	Seven-Day Forecast	Temperature (°C)		Island System Daily Peak Demand (MW)	
			Morning	Evening	Forecast	Adjusted ⁷
Available Island System Supply: ⁵	1,550 MW	Wednesday, September 25, 2019	8	11	885	885
NLH Island Generation: ⁴	1,260 MW	Thursday, September 26, 2019	13	11	935	935
NLH Island Power Purchases: ⁶	105 MW	Friday, September 27, 2019	11	12	870	870
Other Island Generation:	185 MW	Saturday, September 28, 2019	9	7	915	915
ML/LIL Imports:	- MW	Sunday, September 29, 2019	8	11	890	890
Current St. John's Temperature & Windchill:	7 °C	Monday, September 30, 2019	6	5	1,080	1,080
7-Day Island Peak Demand Forecast:	1,080 MW	Tuesday, October 01, 2019	5	8	1,045	1,045

Supply Notes For September 25, 2019

- 3
- Notes:
1. Generation outages for running and corrective maintenance are included. These are not unusual for power system operations. They generally do not impact customer supply. The power system operators schedule outages to system equipment whenever possible to coincide with periods when customer demands are low and sufficient supply reserves are available. However, from time to time equipment outages are necessary and reserves may be impacted.
 2. Due to the Island system having no synchronous connections to the larger North American grid, when there is a sudden loss of large generating units there may be a requirement for some customer's load to be interrupted for short periods to bring generation output equal to customer demand. This automatic action of power system protection, referred to as under frequency load shedding (UFLS), is necessary to ensure the integrity and reliability of system equipment. Under frequency events have typically occurred 5 to 8 times per year on the Island Interconnected System and the resultant customer load interruptions are generally less than 30 minutes. With the activation of the Maritime Link frequency controller during the winter of 2018, UFLS events have occurred less frequently.
 3. As of 0800 Hours.
 4. Gross output including station service at Holyrood (24.5 MW) and improved NLH hydraulic output due to water levels (35 MW).
 5. Gross output from all Island sources (including Note 4).
 6. NLH Island Power Purchases include: CBPP Co-Gen, Nalcor Exploits, Rattle Brook, Star Lake, Wind Generation and capacity assistance (when applicable).
 7. Adjusted for curtailable load, market activities and the impact of voltage reduction when applicable.

**Section 3
Island Peak Demand Information
Previous Day Actual Peak and Current Day Forecast Peak**

Tue, Sep 24, 2019	Actual Island Peak Demand ⁸	19:50	828 MW
Wed, Sep 25, 2019	Forecast Island Peak Demand		885 MW

- Notes: 8. Island Demand / LIL / ML Exports (where applicable) is supplied by NLH generation and purchases, plus generation owned and operated by Newfoundland Power and Corner Brook Pulp & Paper (Deer Lake Power, DLP).